

# FUNNEL

PRODUCT IMPROVEMENTS

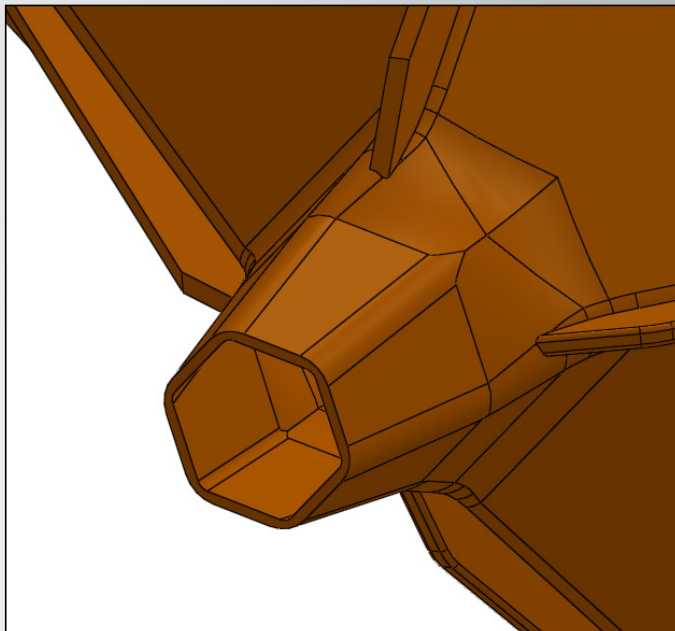


SQUARE SHAPE INTENDED TO  
REDUCE INEFFICIENT CIRCULAR  
WATER FLOW

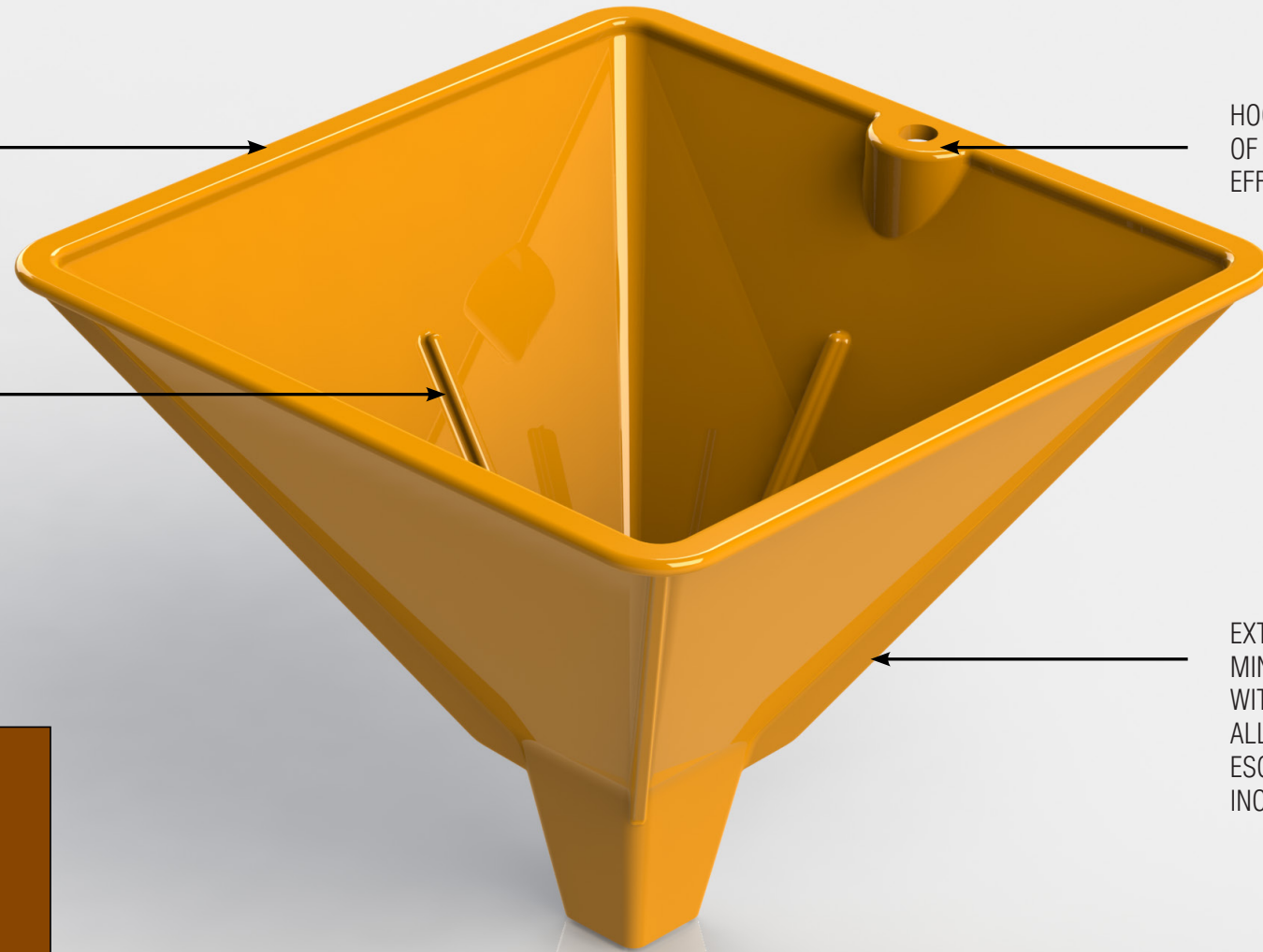
INTERIOR RIBS INTENDED TO  
DISRUPT CIRCULAR WATER FLOW  
AND RESULT IN MORE EFFICIENT  
POURING OF LIQUID

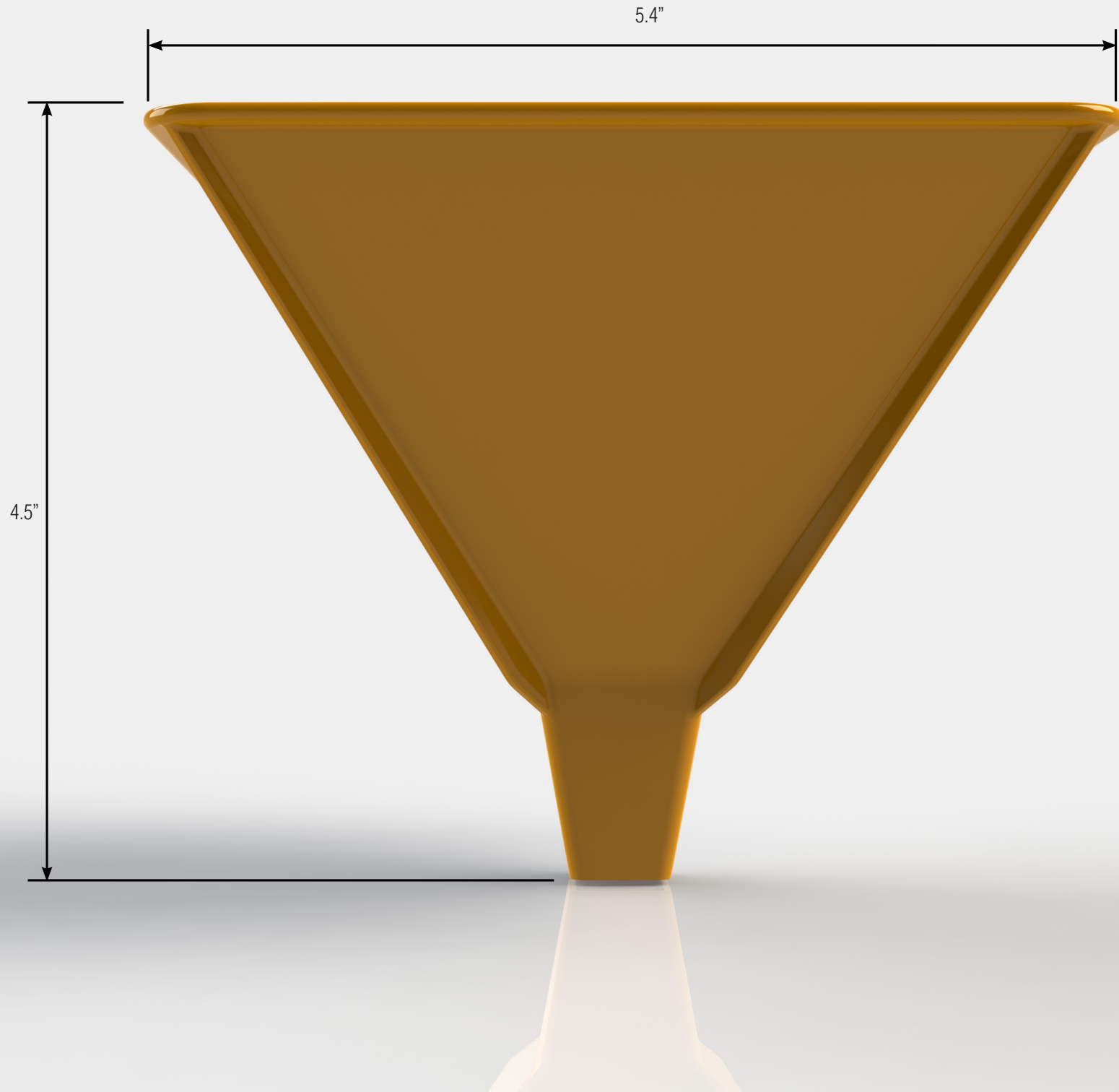
HOOK HOLE MOVED TO INTERIOR  
OF FUNNEL TO ALLOW FOR  
EFFICIENT PACK-OUT

EXTERIOR RIB DESIGNED TO  
MINIMIZE SURFACE CONTACT  
WITH CONTAINER OPENING,  
ALLOWING FOR MORE AIR TO  
ESCAPE THE CONTAINER AND  
INCREASE POUR RATE



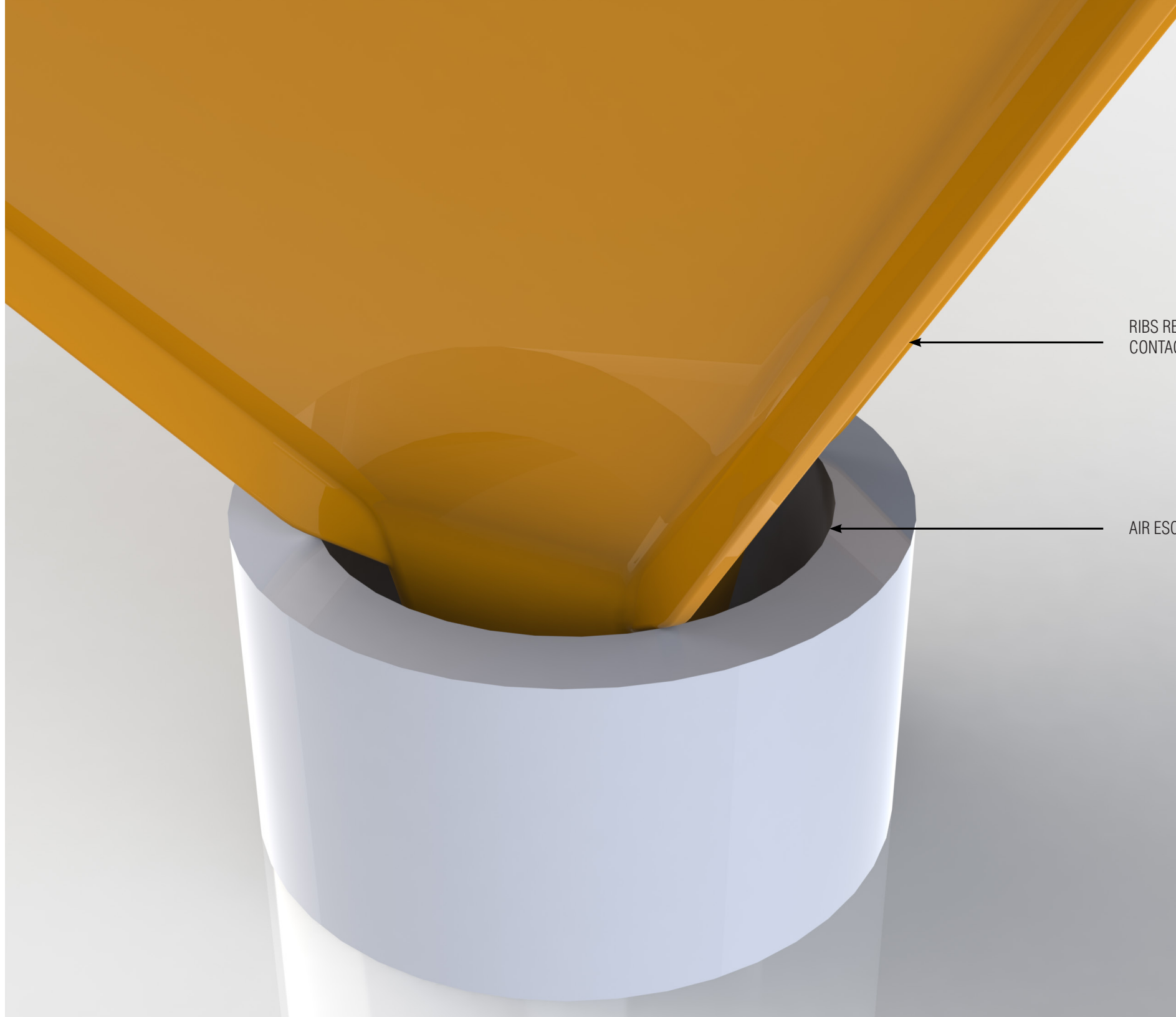
POSSIBLE ALTERNATIVE OPENING  
SHAPE TO MAXIMIZE EXITING  
VOLUME AND AVOID PATENT  
ISSUES





5.4"

4.5"



RIBS REDUCE SURFACE AREA  
CONTACT WITH OPENING

AIR ESCAPE IS MAXIMIZED